

# How to Set up Cricut Maker 3 on Computer: A Stepwise Guide

Are you wondering which Cricut machine to buy since they come in many varieties? Almost all are good, each having their own unique features. Cricut Maker 3 is one of the best. What sets it apart from the rest is that it has constantly evolved over the years, making it easier to set up than its predecessors.

This blog will walk you through each and every step that is needed to know [how to set up Cricut Maker 3 on computer](#). If you are setting up your machine for the first time, read the whole post carefully. Let's dig right into the world of creativity and make your crafting experience more wholesome.

## Cricut Maker 3: Uses and Features

Cricut Maker 3 is an excellent choice among users due to its innovative features and design. This product has built a grip on the craft market with novel features not previously available in earlier versions. Some of its most important features include:

- **Cutting:** The official website states it can cut through over 300 materials, like leather, fabrics, chipboard, and wood.
- **Engraving:** It has various compatible tools that can cut through materials and engrave, foil, and even emboss on different materials.

- Different tools: It has an amazing list of 13 tools that can be used to cut through various materials previously impossible to cut through as easily as this machine does.

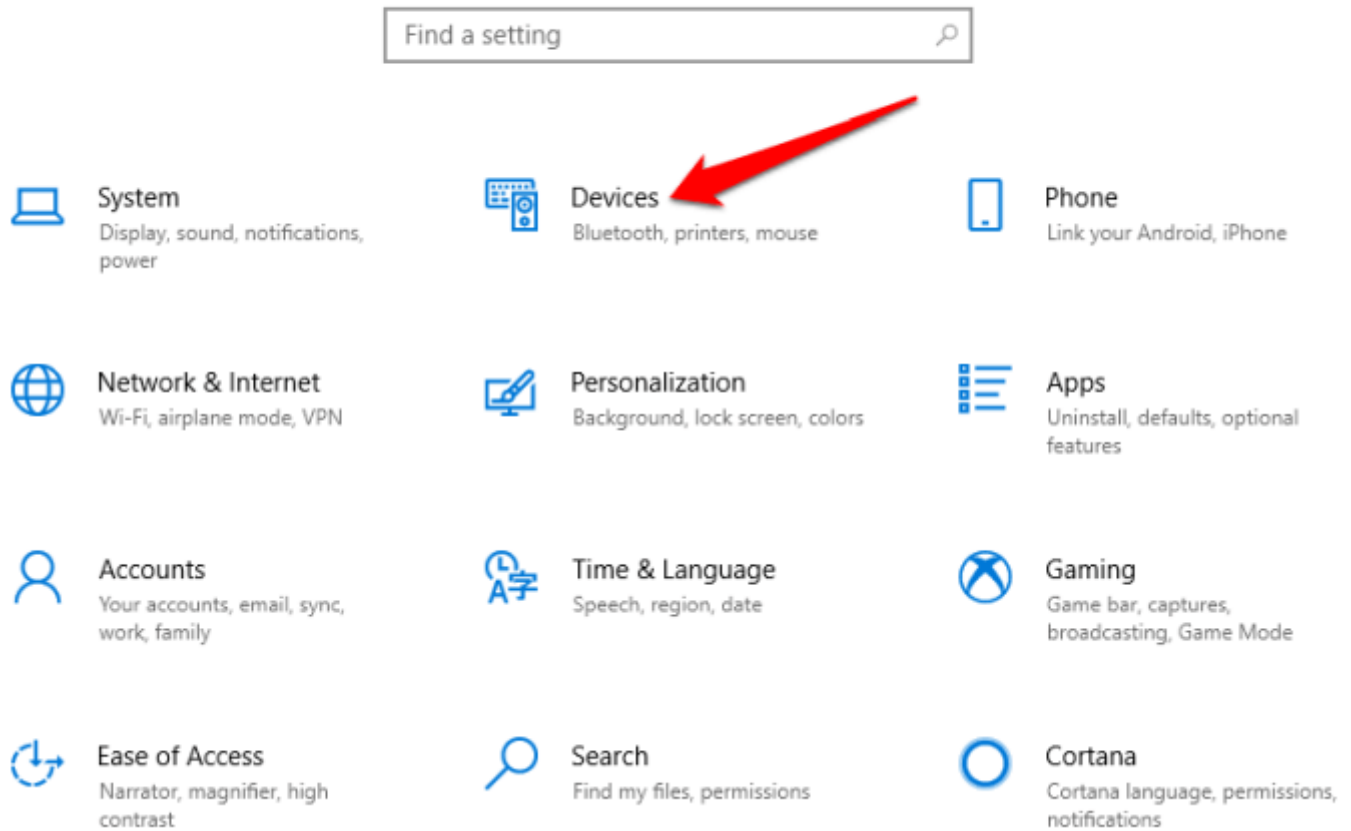
## **How to Set up Cricut Maker 3 on Computer (Windows)**

After you get your hands on the crafting machine, the first thing you should do is to check whether all the accessories are available or not. If you have all the tools, your task is half done already. Now, let's see how to start setting up your machine. You have got two options to do this. One is through Bluetooth, and the other is with the help of a USB cable.

### **Method 1: Using Bluetooth**

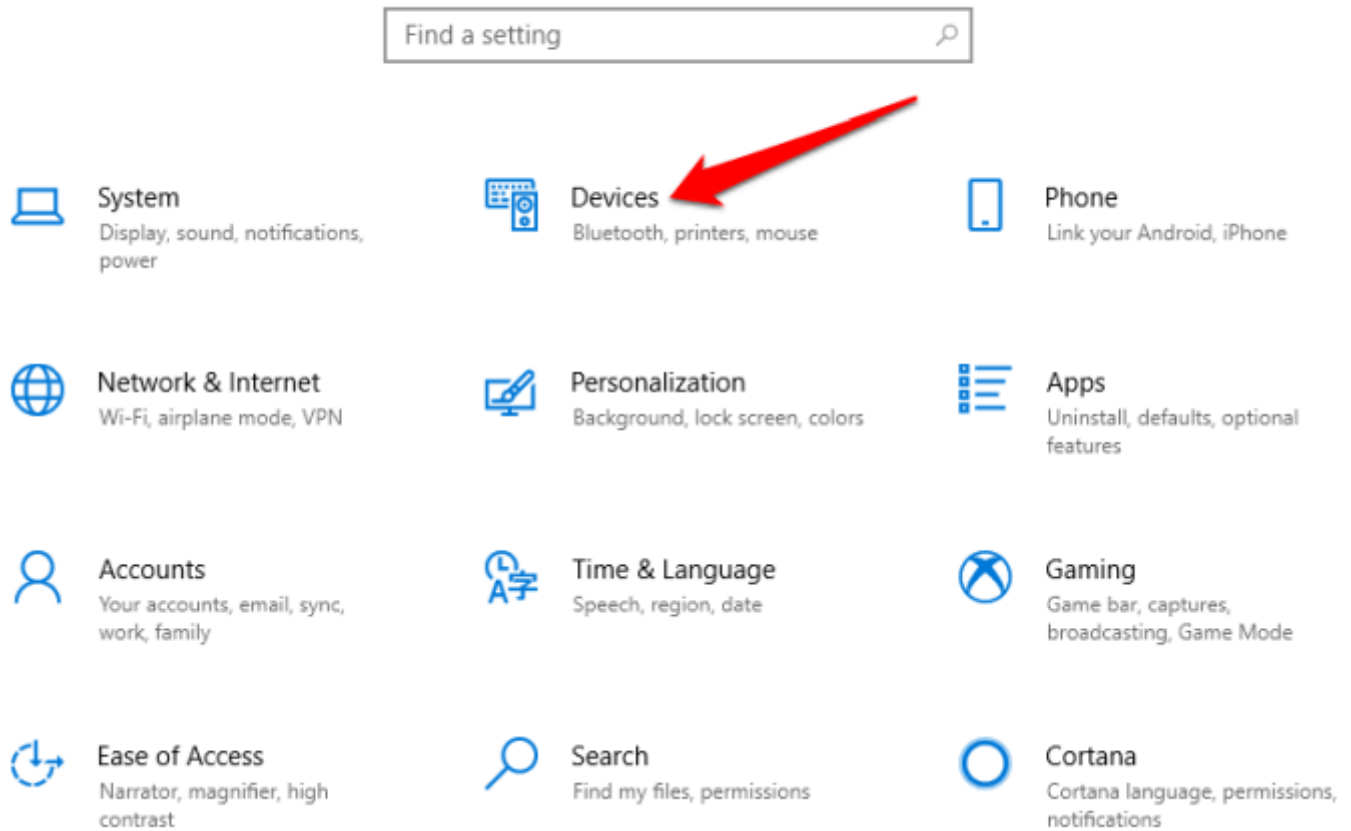
Let's go through the necessary steps to set up your machine on your Windows by using Bluetooth.

# Windows Settings

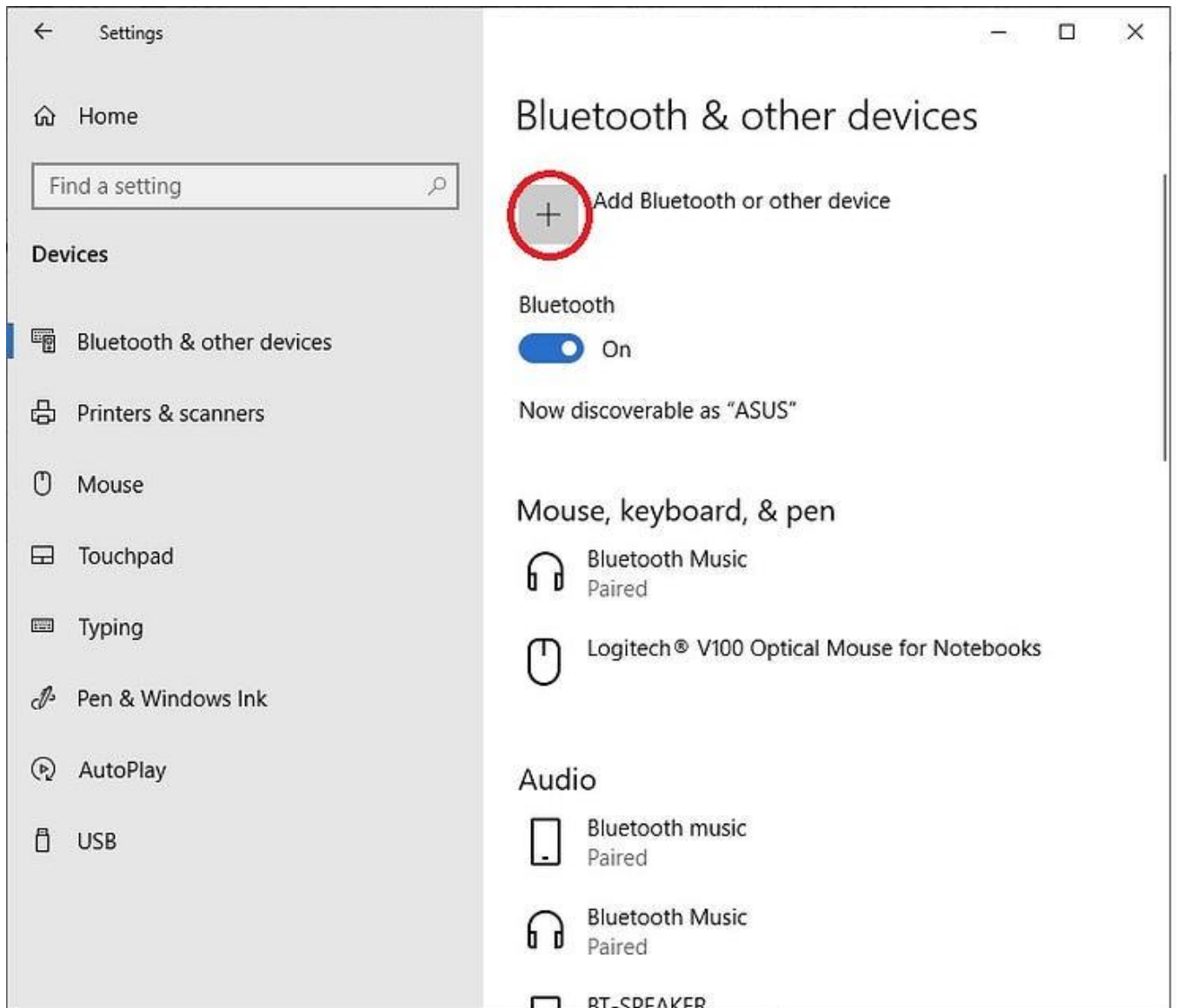


1. First and foremost, place your machine on a cool, dry, flat surface and plug it into your power source.
2. Then, you should place your windows within 10 -15 feet of it. (If you are connecting it via Bluetooth.)
3. Next, you have to go to the Settings section (the wheel icon) and hit the Devices option.

# Windows Settings



1. Hover your mouse over the Bluetooth and other devices and turn the Bluetooth by toggling the on-off button.
2. Now, click on the (+) sign adjacent to the Add Bluetooth or other devices option.



1. Hit the Bluetooth icon and wait for your machine to connect to your windows.

Congratulations! Your machine is now successfully paired with your Windows computer. When you return to the Design Space app, it will show as connected.

## **Method 2: With Windows AMD Ryzen Chipset**

Sometimes, during the setup process for the machine, in some versions of Windows, particularly those with AMD Ryzen chipset, a USB connection is not generally supported, and sometimes, people find it hard to set up the machine with a USB cable. Therefore, the AMD Ryzen chipset is generally suggested to use Bluetooth connectivity to set up the Cricut machine or related products. It is usually observed that there is an issue with AMD Ryzen chips that makes it difficult to connect using USB. If one still wants to use a USB cable as a main connection, it is advised that one use a USB hub with Windows.

### **Method 3: Through a USB Cable**

Now, if you want to connect your machine to your Windows computer with USB, you can also do that. Your product usually comes with a USB cord to connect to your computer. For a successful connection, follow the steps below:

1. Connect one end of the USB cable to the port of your computer and the other to the end port of your machine.
2. Now, plug your power source into your machine. If the machine's button lights up, it shows that it is on and working properly.
3. Now, you can safely return to your Design Space app; it should ideally show you connected.

Important Note: The above instructions will work only on the 10th version of Windows only.

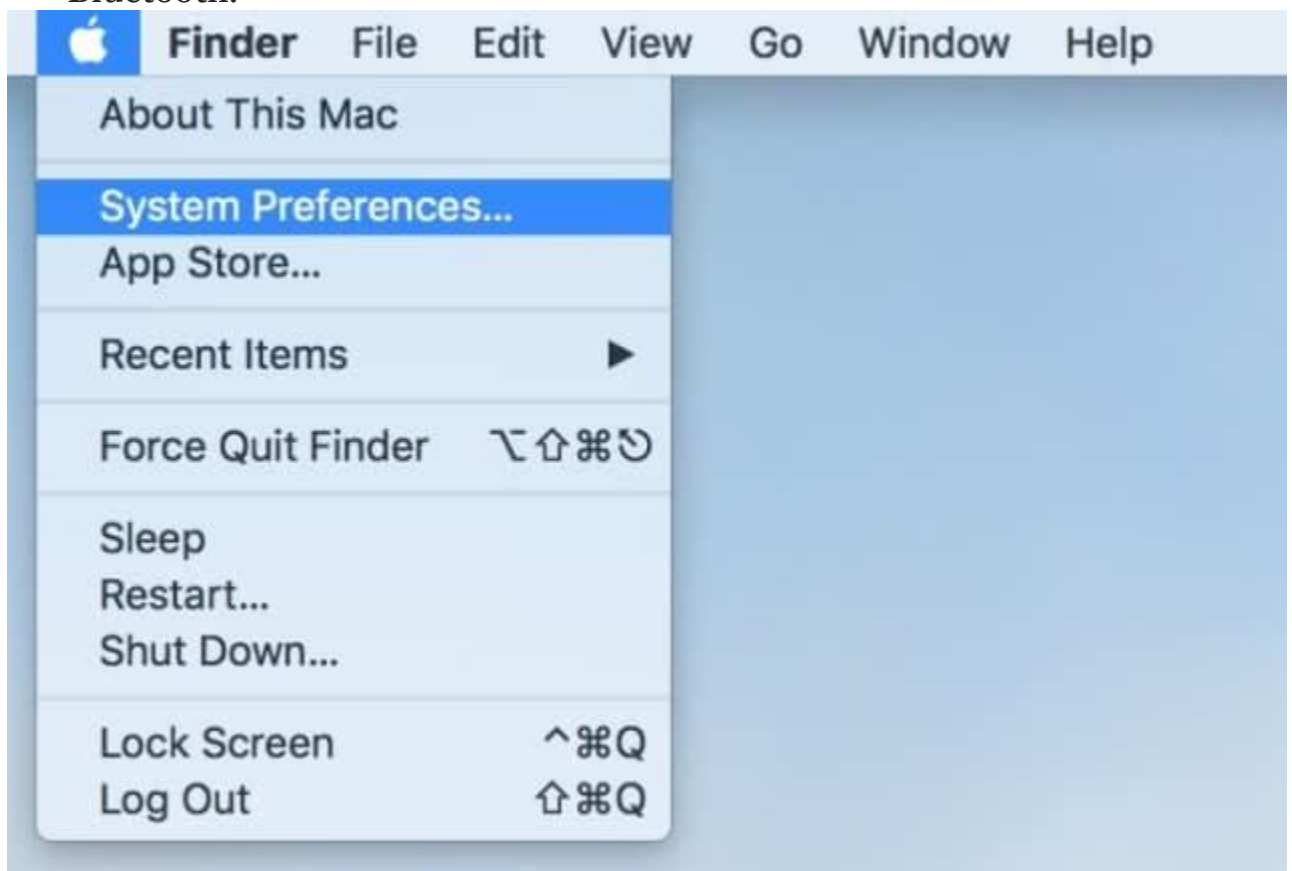
### **How to Set up Cricut Maker 3 on Computer (Mac)**

Here are the steps you need to follow to set up your crafting machine on your MacBook.

## Method 1: Via Bluetooth

Let's start with the wireless connection, which is Bluetooth. Simply complete the directions below for setting up your machine to your Mac computer:

1. First, place the machine within 10–15 feet of your Mac and plug in the power source of your machine.
2. Then, go to the Apple menu, scroll to System Preferences, and select Bluetooth.



1. Now, turn the Bluetooth on, and look for your machine's Bluetooth name in the list of devices.
2. If you can find it, click on the name and type in the general password for all your machines, e.g. 0000.
3. If the password is incorrect, look at the bottom of your machine for the Bluetooth password.
4. Type in the password, and you are good to go. Your machine is now fully set up for use and design. Unleash your creativity using your cutting machine.

## **Method 2: Using a USB Cable**

Every Cricut product usually comes with a USB cable. All machines give you two options: connect them to a desktop through wireless Bluetooth or a USB cord. To set up your computer using a USB cable, you must follow these steps carefully:

1. Connect one cable end to the back of the machine and the other to your Mac.
2. Now, power on both your machine and your Mac. If your machine shows a white light when powered on, it functions well, and you need not worry. If it does not, either the USB cable or your machine is faulty.
3. Now, you must return to your Design Space app. Your machine should ideally show as connected to your computer.



Now, you can start making your designs, or you can use their pre-installed templates if you are a beginner. You can play, edit, and customize them according to your needs and preferences. Learn as much as possible, and start crafting with this amazing machine.

## **Conclusion**

Who would want to avoid having a machine that is easier to handle, faster, and powerful enough to cut through more than 300 materials, including chipboard, balsa wood, clothes like fleece, denim, and many more? With the added advantage of 13 different tools that cut through various materials, this amazing product is a must-have for any craft enthusiast. Knowing [how to set up Cricut Maker 3 on computer](#) not only makes the experience smoother but also paves the way for beginners to learn and grow through the use of this amazing product.

## **FAQs**

### **Why Does My Cricut Maker 3 Won't Connect via Bluetooth?**

There can be several reasons why your machine won't connect to your Bluetooth. Sometimes, your system's Bluetooth might be turned off, and one has to turn it on manually. In other instances, if you are using a Mac, you have to go to the Bluetooth settings to toggle the switch on for the Design Space app in the macOS Sonoma version.

### **Why Choose Cricut Maker 3?**

The better question is, why not? This brilliant machine is much faster than its previous models and is much more compatible with smart

materials than its competitors, and that is what makes it more interesting and sets it apart from the competition. It is the go-to place for anyone who wants a fast and powerful cutting machine.

## **What Are the System Requirements for Computer to Use Cricut Maker 3?**

To run the machine on Windows, one would require 2 GB of free disk space, a minimum of 4 GB of RAM, 1024 x 768 pixels screen resolution, and a stable internet connection or Wi-Fi, with a minimum downloading capacity of 2–3 Mbps and uploading speed of 1–2 Mbps. For Mac users, the requirements are the same except for a CPU of at least 1.83 GHz.

Source: [How to set up Cricut Maker 3 on computer](#)

Visit here to Know More: [Cricut.com/setup](https://www.cricut.com/setup)

[Twitter](#)

[Pinterest](#)